

Omnis DataBridge

May 11, 2008

The Omnis DataBridge is the tool that allows datafile sharing with various computer platforms (Apple OSX, Windows XP, Vista, Unix). It is also a requirement if you are running the Apple OSX Server version 10.4 or higher, even if all the user stations are Macintosh computers.

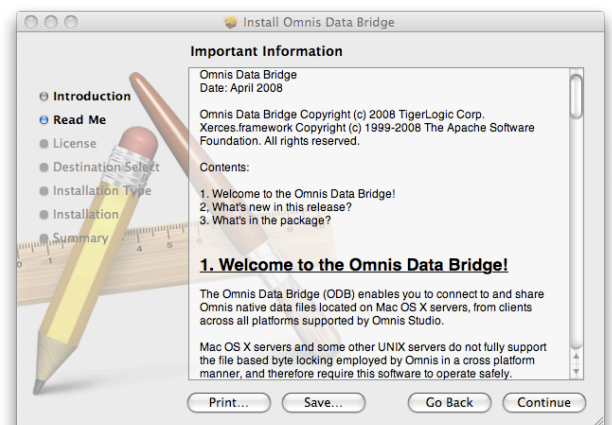
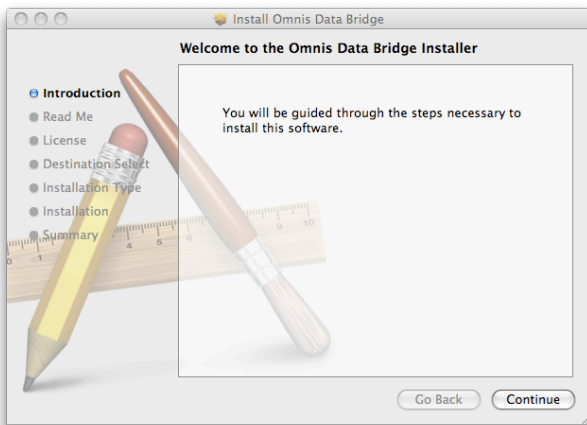
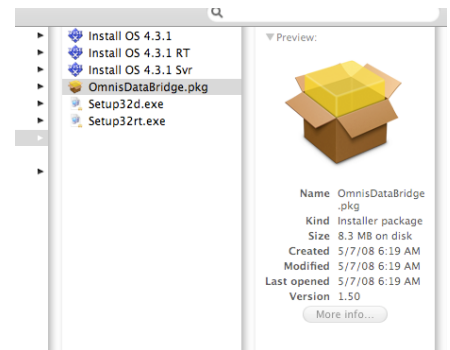
The other advantage of the Omnis DataBridge is improved network performance. It is much faster than regular data sharing protocols.

Necessary Files: - OmnisDataBridge.pkg (installer package)
 - ODBStart.command (startup command)
 - Property List Editor (setup tool)
 - Terminal (manual activation tool)

Installation

Locate the OmnisDataBridge.pkg file and open it.

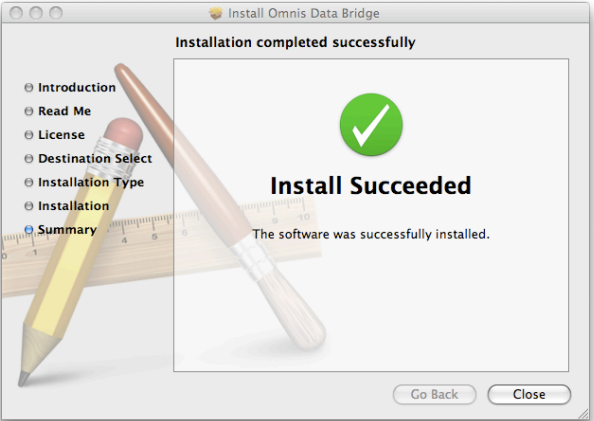
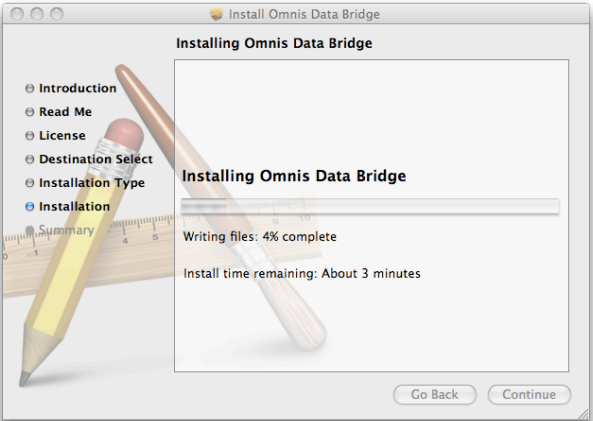
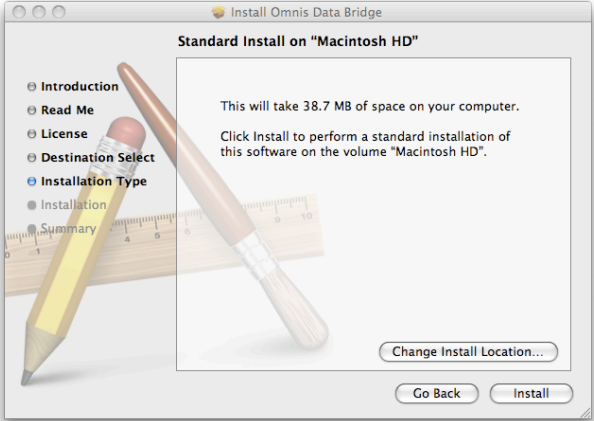
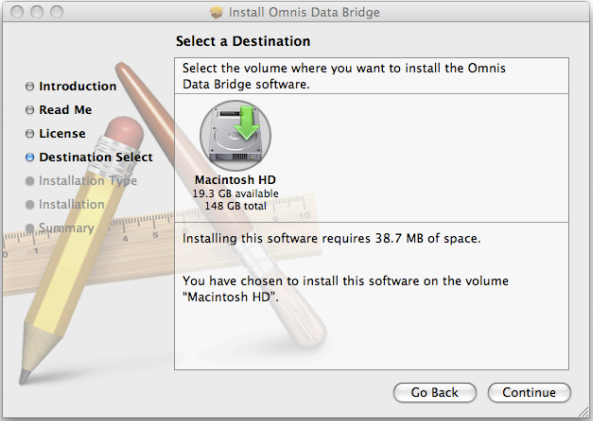
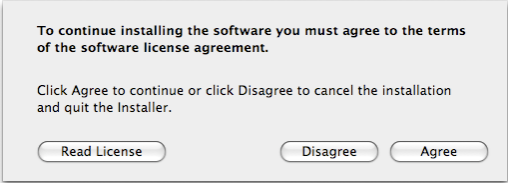
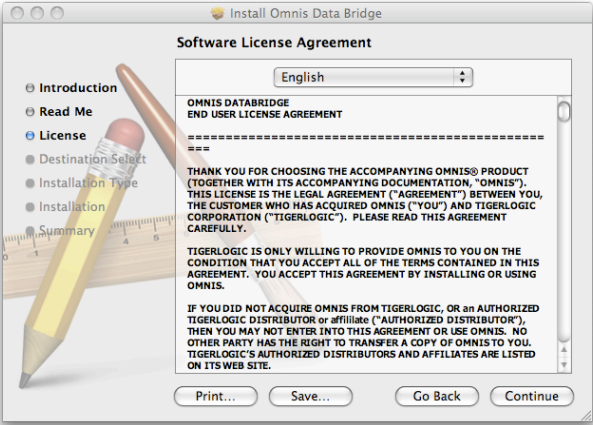
Then follow the Instructions through the screen displayed below.





Omnis DataBridge

SYS-003
May 11, 2008



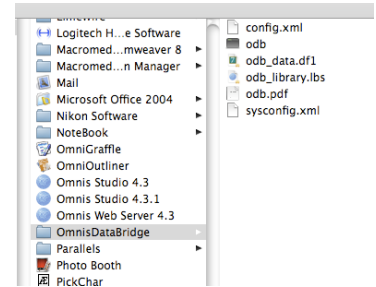
Omnis DataBridge

SYS-003
May 11, 2008

Setup

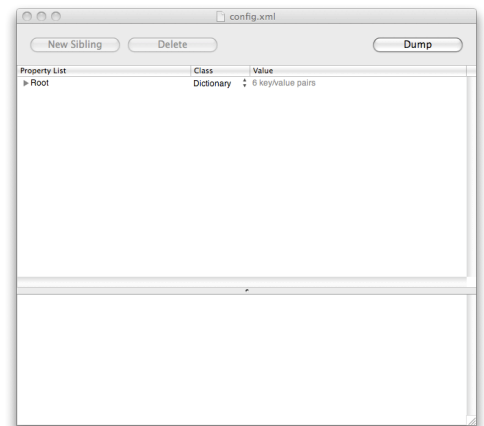
The Installer has added an OmnisDataBridge folder to the Applications folder of your Server.

This folder contains a file named 'config.xml'. You will now need to edit this file using the Property List Editor application provided in your Server Tools folder.



Open Property List Editor and select the 'config.xml' file from the File/Open menu. The 'config.xml' file is located in the Applications/OmnisDataBridge folder.

The screen should look like this.

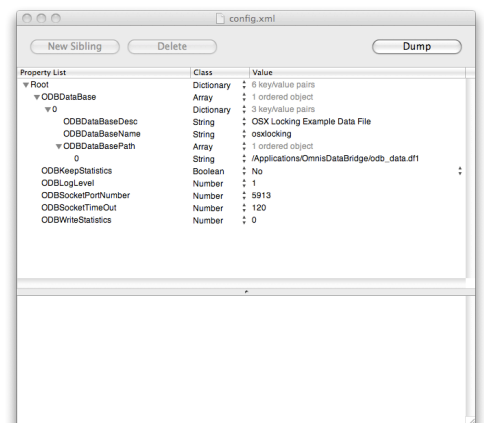


Click on the expansion tab at the left of Root.

Click on the tab before ODBDataBase.

Click on the tab before 0

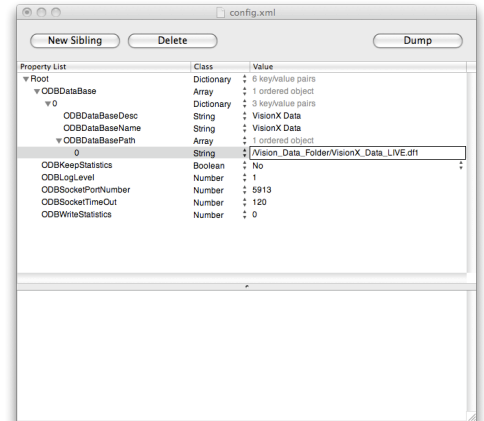
Click on the tab before ODBDataBasePath



Click on the ODBDataBaseDesc line and edit its 'Value' field to something such as 'VisionX Data'.

Repeat the process for the ODBDatabaseName.

Click on the 0 line in the ODBDataBasePath section and enter the path of your VisionX datafile. The path of the file is the location where it is located inside your Server. Make sure to include all folders starting from the Server root level, each folder name separated by a '/'.
The example on the right specifies that the VisionX datafile name 'VisionX_Data_LIVE.df1' is located inside a folder name 'VisionX_Data_Folder' within the Server.



Click on the ODBSocketPortNumber and set its value to 5913.

Save the changes made to the 'config.xml' file by using the File/Save command.

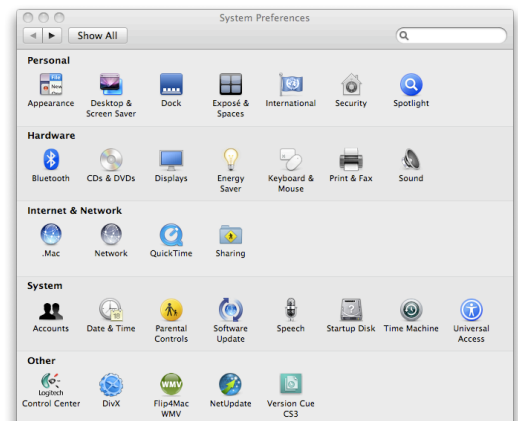
Running the DataBridge

Automatic Startup:

You may specify your Server to automatically start the DataBridge at startup.

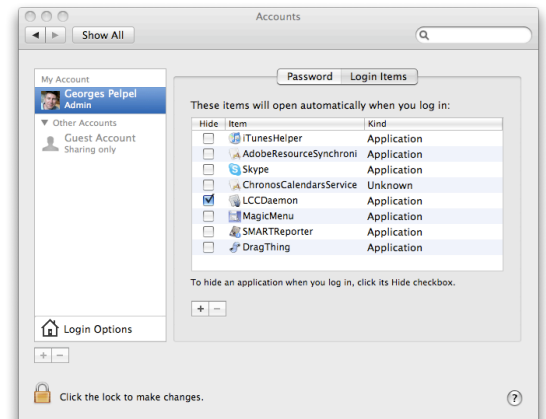
To do so, select System Preferences from the Apple menu.

Click on Accounts in the System section.



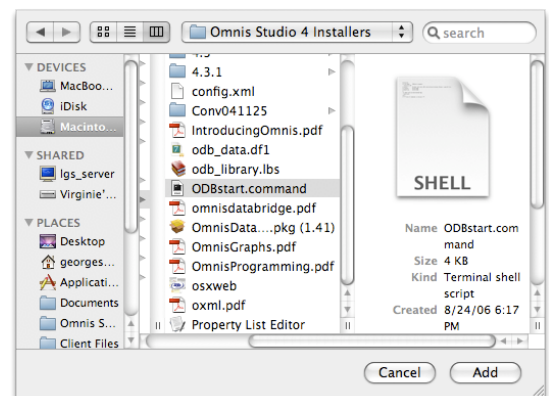
Click on the Login Items tab.

Click the Add button (+).



Select the ODBStart.command file and click the Add button.

Close the System Preferences window and restart the Server.



Manual Startup

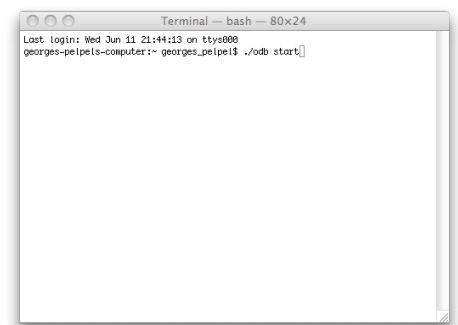
You may launch the DataBridge manually without restarting the Server by using the Terminal application.

Open Terminal.

At the prompt, enter the command: `./odb start`

Press the Return key.

You should receive a message indicating the successful launch:
Executing start...



Omnis DataBridge

VisionX Setup

Once the DataBridge has been setup and started you will need to prepare VisionX for accessing your datafile through this faster protocol.

Open VisionX as usual and make sure you login as the Administrator.

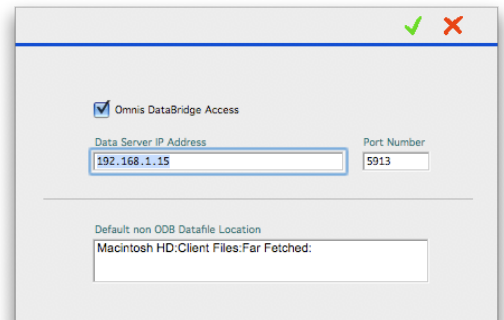
From the File menu, select Setup/Data Access.

Activate the Omnis DataBridge Access check box.

Enter your Server IP Address and the Port Access allocated to the DataBridge, probably 5913 if you followed the above instructions.

Click the Save button.

VisionX is now ready to use the DataBridge.



Accessing the DataBridge from VisionX

From the File menu, select Change Datafile.

The Multi-User Access? prompt offers the option to either access your VisionX datafile the old fashion way (No), or through the Omnis DataBridge (Yes).

Click Yes.

A list of datafiles linked to the DataBridge appears.

Double-click on the VisionX Datafile you wish to access.

You are now working via the Omnis DataBridge and taking advantage of its faster performance and multi-platform sharing features.

If you copy your VisionX application to the other stations of your network, each user will automatically be linked to the datafile via the Bridge.

